

9 Master Plan

9.1 2020 Master Plan

A layout showing the 2020 Master Plan airport boundary is shown at Figure 9-1 below.

Key features of the 2020 Master Plan are:

- ◆ Runway 18/36 is retained and Runway 13/31 is added (subject to demand).
- ◆ The RPT apron is reconfigured to overcome current operational limitations and accommodate peak stand demand.
- ◆ The passenger terminal is expanded to accommodate forecast demand and provision is made to accommodate international (trans-Tasman) services.
- ◆ Car park layout is revised to allow SCA to better manage access to the terminal and to levy charges to all vehicle categories,
- ◆ A new airport access road from David Low Way is constructed allowing additional lettable sites to be established in both the southern GA area and the commercial precinct.
- ◆ GA facilities are expanded.
- ◆ Dedicated helicopter operating areas are established at the west end of the western GA area
- ◆ Enhanced aviation support facilities are provided, including
 - ARFFS facilities
 - Aircraft refuelling facilities
 - Air cargo handling facilities
 - Ground service equipment storage and maintenance facilities
- ◆ The commercial precinct is expanded, with sites for various aviation and non-aviation commercial activities, including car rental offices, valet and servicing, a site for an office complex and flying training schools

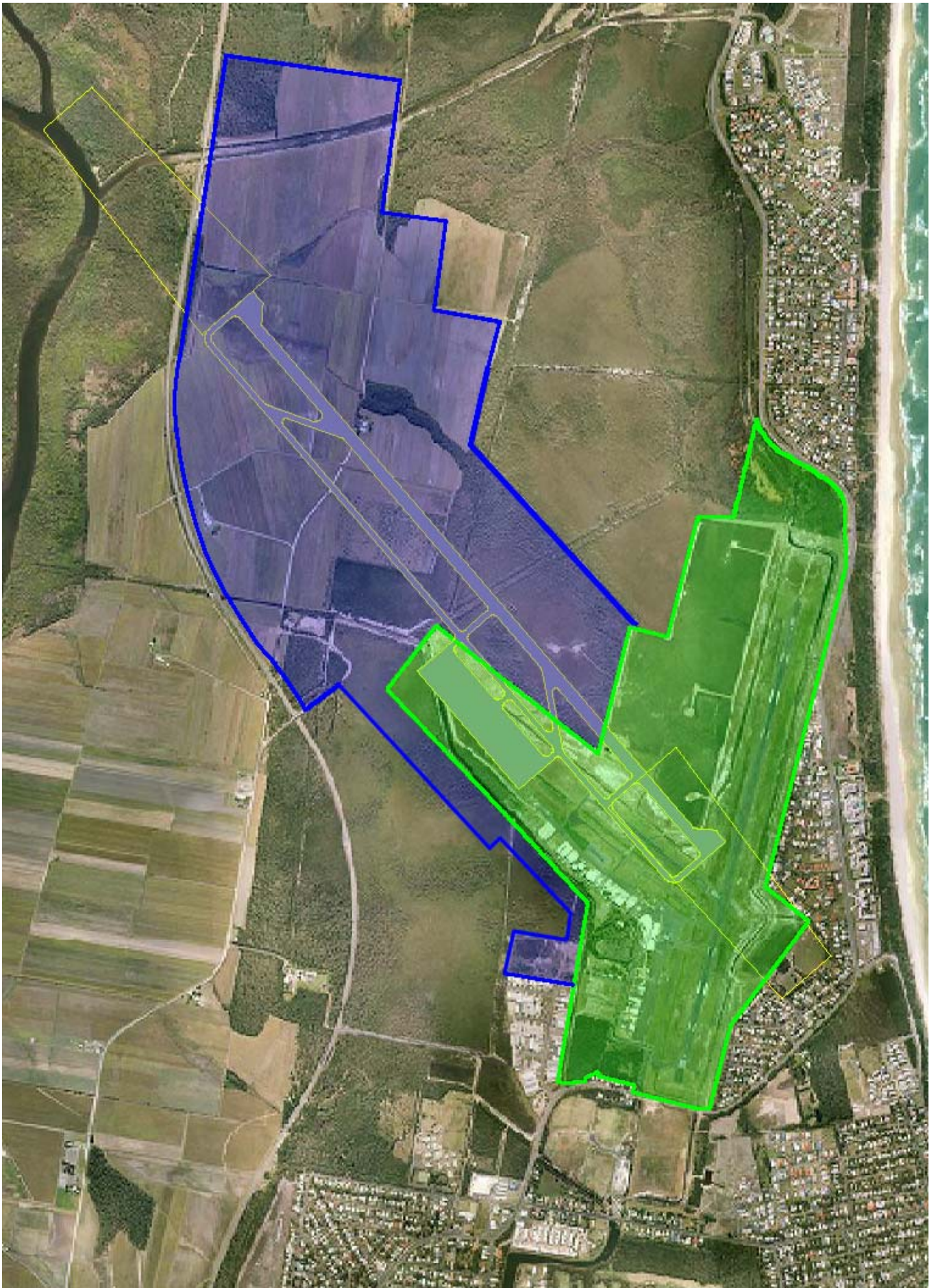


FIGURE 9-1 MASTER PLAN (EXISTING BOUNDARIES IN GREEN, PLANNED BOUNDARIES IN BLUE)